

H.A Groups

Nepal's Biggest Rental based company



H. A GROUPS

- H.A Hydropower Pvt. Ltd.
- Antique Engineering & Construction Co. Pvt.Ltd.
- Anup Construction
- Bhawani Engineering And Construction Pvt. Ltd
- H.A Construction Pvt. Ltd
- Anusha Oli Store

H.A Groups

Nepal's Biggest Rental based company

HA Groups is a Nepal-based equipment rental company with over 30 years of experience supporting construction, engineering, and infrastructure projects. The company focuses on providing reliable, well-maintained equipment suited to a wide range of project needs.

In addition to its rental services, HA Groups is associated with several companies, including HA Construction Pvt. Ltd., ANUP Construction, Antique Engineering, Anusha Oil Stores, Bhawani Engineering and Construction Pvt. Ltd., and H.A Hydropower Pvt. Ltd. Through these associations, the group is involved in construction, engineering, energy, and supply-related sectors.

The company has built its presence over time through consistent service, practical solutions, and industry experience.

◀ Our Equipments

XCMG XR1751 Piling Rig

The XCMG XR1751 is a rotary drilling piling rig designed for foundation construction. It features a maximum drilling depth of around 56 m and a drilling diameter of up to 1500 mm. Powered by a high-performance engine (~150–180 kW), it offers strong torque (~175 kN·m) and efficient hydraulic systems, making it suitable for urban and highway piling projects.



CASAGRANDE C400XP Piling Rig

The Casagrande C400XP is a heavy-duty piling rig used for large-diameter deep foundation work. It delivers a maximum torque of approximately 400 kN·m with drilling depths exceeding 100m depending on configuration. Equipped with advanced hydraulics and automation, it is ideal for complex geotechnical conditions.

Vögele Super 1400 Paver

The Vögele Super 1400 is a compact asphalt paver designed for road construction and urban paving. It has a paving width of up to 6.5 m (extendable) and a maximum paving capacity of around 600 tons/hour. Its efficient screed heating system and precise control ensure smooth, even road surfaces.



Atlas Boomer L2D

The Atlas Copco Boomer L2D is a twin-boom underground drilling jumbo used in tunneling. It features two hydraulic drilling booms, coverage of up to 45 m², and advanced control systems for precise drilling. It is widely used in mining and tunnel excavation.



Epiroc Boomer L2D

The Epiroc Boomer L2D is the upgraded version of the Atlas model, offering improved automation and drilling accuracy. It includes modern control systems, dual-boom drilling, and high penetration rates, making it ideal for efficient underground excavation.



Putzmeister 36-4 Concrete Boom Truck

The Putzmeister 36-4 is a concrete pump truck with a 36-meter vertical reach and 4-section boom. It provides high pumping output (~160 m³/h) and excellent maneuverability, making it suitable for mid-sized construction projects.



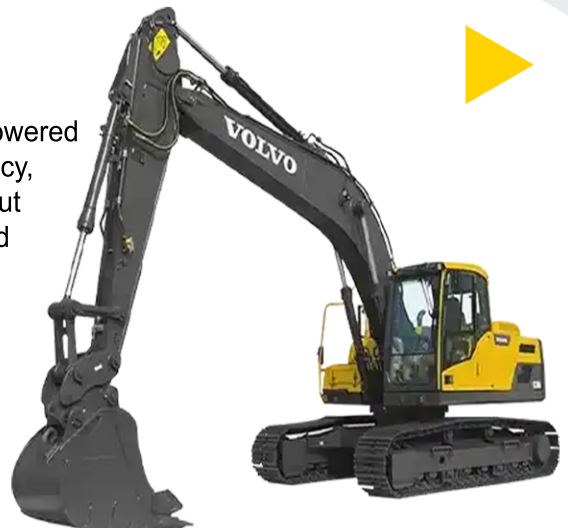
Putzmeister 46-5 Concrete Boom Truck

The Putzmeister 46-5 offers a larger 46-meter reach with a 5-section boom for high-rise and large-scale construction. It delivers high pumping capacity (~160–180 m³/h) and advanced control for precise concrete placement.



Volvo EC210D Excavator

The Volvo EC210D is a 21-ton crawler excavator powered by a ~123 kW engine. It offers excellent fuel efficiency, a digging depth of around 6.7 m, and strong breakout force, making it suitable for general construction and earthmoving.





Volvo EC210D Excavator with Breaker

This variant includes a hydraulic breaker attachment or demolition work. It retains the same engine power (~123 kW) but is optimized for breaking concrete and rocks, commonly used in road and structure demolition.



Komatsu PC200 Excavator

The Komatsu PC200 is a 20-ton excavator with a ~110–123 kW engine. It offers a digging depth of about 6.5–7 m and is widely used for excavation, trenching, and construction tasks due to its reliability.

Komatsu PC300 Excavator

The Komatsu PC300 is a larger 30-ton excavator with around 180–190 kW power. It provides deeper digging (~7–8 m) and higher productivity, ideal for heavy-duty earthmoving and mining.



Komatsu PC120 Excavator

The Komatsu PC120 is a compact 12-ton excavator with ~66 kW power. It is suitable for smaller construction sites, offering maneuverability and efficient digging up to around 5.5 m depth.

XCMG XE215C Excavator

The XCMG XE215C is a 21-ton excavator powered by ~128 kW. It features advanced hydraulics, a digging depth of around 6.6 m, and is used for general construction and material handling.



XCMG ZL50GN Wheel Loader

The XCMG ZL50GN is a 5-ton wheel loader with a bucket capacity of ~3 m³ and engine power of ~162 kW. It is used for loading, lifting, and transporting bulk materials on construction sites.



Komatsu WA300-1 Wheel Loader

The Komatsu WA300-1 is a mid-sized loader with a bucket capacity of ~2.5–3 m³ and engine power around 120–140 kW. It is known for durability and is used for material handling and loading.



XCMG GR165 Grader

The XCMG GR165 is a motor grader with a 165 HP engine. It features a blade width of ~3.7 m and is used for road leveling, grading, and maintenance work.





XCMG GR135 Grader

The XCMG GR135 is a smaller grader with a 135 HP engine. It offers precision grading and is suitable for rural roads and lighter construction work.



SDLG G9190 Grader

The SDLG G9190 is a heavy-duty grader with ~190 HP and a blade width of ~4 m. It is used for large-scale road construction and earth leveling.



Ajax Fiori Argo 2500 Self-Loading Mixer

The Ajax Fiori Argo 2500 is a self-loading concrete mixer with a drum capacity of 2.5 m³. It includes a 4x4 drive system and automatic batching, making it ideal for on-site concrete production.



Sino Howo 336 Trailer Truck

The Sino Howo 336 is a heavy-duty truck with a 336 HP engine. It is designed for hauling construction materials and equipment over long distances with high load capacity.



Volvo PT220 Roller

The Volvo PT220 is a pneumatic tire roller used for asphalt compaction. It provides uniform pressure distribution and is ideal for finishing road surfaces.



Dynapac CA255 Roller

The Dynapac CA255 is a single drum vibratory roller with an operating weight of ~12–13 tons. It is used for soil and asphalt compaction with strong vibration force.



Case 851EX Backhoe Loader

The Case 851EX is a backhoe loader with ~74 HP. It combines a front loader and rear excavator, making it versatile for digging, loading, and utility work.



Case 450DX Roller

The Case 450DX is a tandem vibratory roller used for asphalt compaction. It offers smooth finishing and efficient compaction for roads and pavements.





Komatsu D65E Dozer

The Komatsu D65E is a crawler dozer with ~200 HP. It is used for pushing, grading, and earthmoving, featuring a large blade and strong traction.



Atlas Copco XA76 Compressor

The Atlas Copco XA76 is a portable air compressor delivering ~76 CFM airflow. It is used for powering pneumatic tools like breakers and drills.



Tata 2518 Transit Mixer

The Tata 2518 transit mixer has a 6–8 m³ drum capacity and ~180 HP engine. It is used for transporting ready-mix concrete to construction sites.



ACE F210 Crane

The ACE F210 is a 21-ton capacity mobile crane with telescopic boom. It is used for lifting and placing heavy materials on construction sites.

Ashok Leyland 10-Wheel Tipper

This tipper truck is powered by ~180–220 HP and is used for transporting sand, gravel, and debris. It features a hydraulic tipping system for easy unloading.



Eicher Pro 6025 Transit Mixer

The Eicher Pro 6025 is a modern transit mixer with ~7 m³ capacity and fuel-efficient engine (~250 HP). It ensures consistent mixing and delivery of concrete.



Water Tanker

Water tankers are used for dust suppression, road cleaning, and water supply. Capacities typically range from 5,000 to 15,000 liters depending on configuration.



Diesel Tanker

Diesel tankers are used for transporting and dispensing fuel to construction sites, generators, and fuel stations. They typically have a 5000-liter capacity and include safety systems for secure handling and controlled fuel delivery.



Zoomlion 50-Ton Crane

The Zoomlion 50-ton crane is a truck-mounted crane with a lifting capacity of 50 tons. It features a telescopic boom and advanced hydraulics, ideal for heavy lifting in construction projects.



